

Gaming Center application

User's Manual



Contents

1.	About Gaming center	2
2.	Get Started	3
	2.1 System Requirements	3
	2.2 Supported Hardware	3
3.	Add/Remove Gaming Center	4
	3.1 Installing Gaming Center	4
	3.2 Completely remove Gaming Center	6
4.	Using Gaming enter	9
	4.1 Launching Gaming Center	9
	4.2 Dashboard	9
	4.3 System Information	10
	4.4 Lighting Setting	11
	4.5 Hot Keys Setting	13
	Appendix A - Gaming Center Version	14
	Appendix B – What if Gaming Center is unable to start	15
	Appendix C – Popup message window	16

1. About Gaming Center

- Provides an easy-to-use & intuitive interface to manage user environment and setting up immersive operating effects for better gaming experience and working productivity
- Overview of system resource usage on Dashboard with quick setting feature for frequently used functions
- Change system performance modes (Battery / Human / Beast) to better align with usage scenario, e.g., on-the-road, regular work, or performance/playing games
- Setting Keyboard LED lights and light effects based on personal preference at different usage modes
- Provides Hot-key setting feature based on usage behavior for work, or games to manage an efficient operating environment, e.g. turning off specific keys while playing games, or setting frequently used key strokes for specific actions while playing games
- Other features could be considered in the coming versions

2. Get Started

2.1 System Requirements

Operating System:

- Microsoft Windows 11 64-bit

2.2 Supported Hardware (as of June 2022)

CPU Platform:

- AMD Ryzen™ 5 6600H
- AMD Ryzen™ 7 6800H

Graphics solutions:

- AMD Radeon™ RX6650M (RDNA 2+, Navi 23)
- AMD Radeon™ RX6650M XT (RDNA 2+, Navi 23)

3. Add/Remove Gaming Center

3.1 Installing Gaming Center

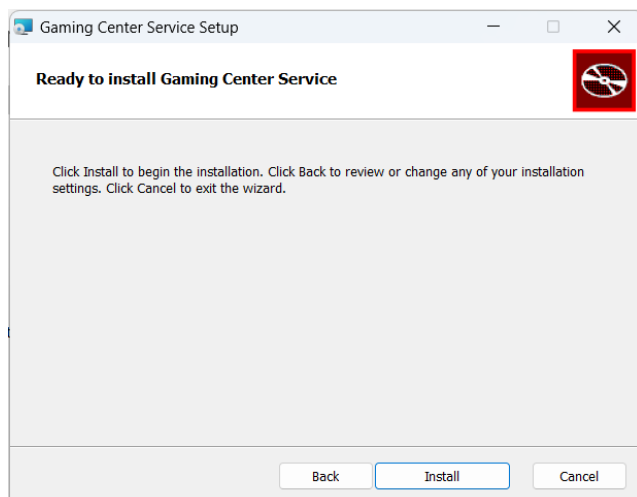
1. Obtain the GamingCenter_Package_x.x.x.x.zip file
2. Double-click on the GamingCenterSetup.msi setup program



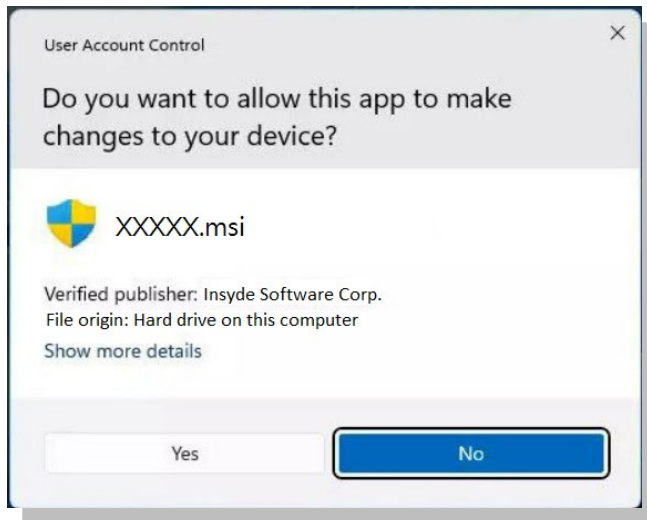
3. Welcome to Gaming Center Service Setup Wizard, please click **'Next'** to get started



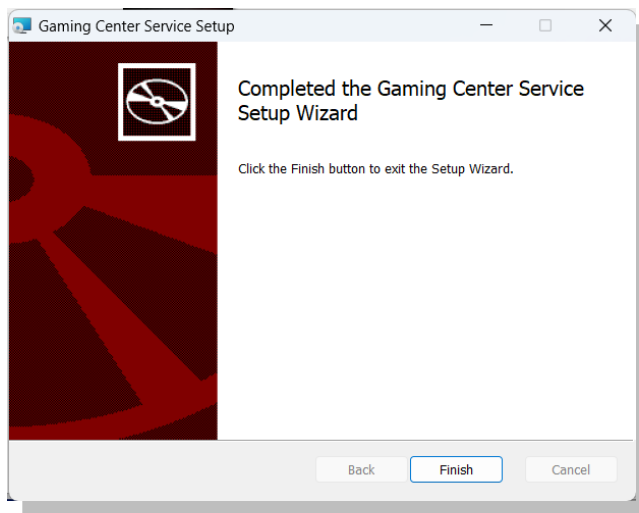
4. Ready to install Gaming Center Service, please click **'Install'** to proceed



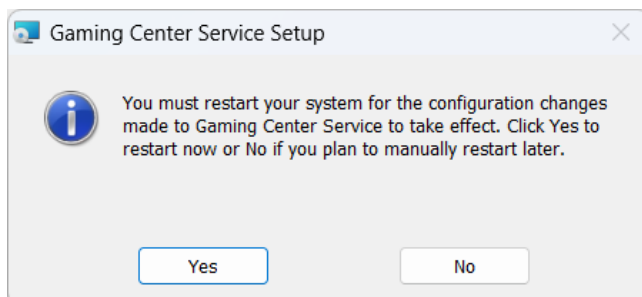
5. In Windows User Account Control, please click **'Yes'** to continue



6. To complete the Gaming Center Service Setup, please click **'Finish'**



7. To re-start system and complete the Gaming Center Service Setup, please click **'Yes'**



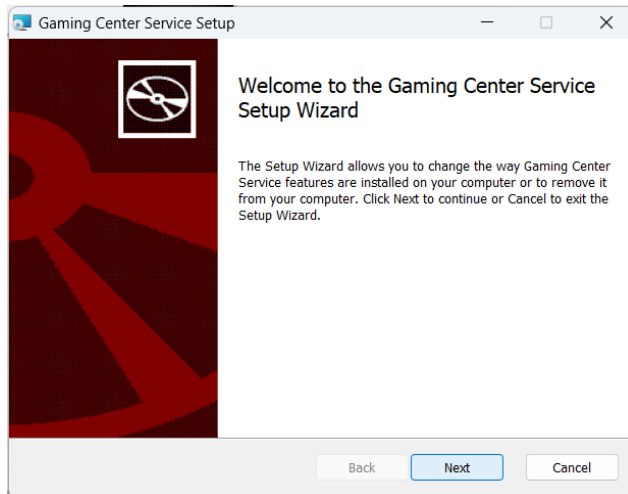
8. System will re-start and back to Windows environment, Installation process completed

3.2 Completely remove Gaming Center

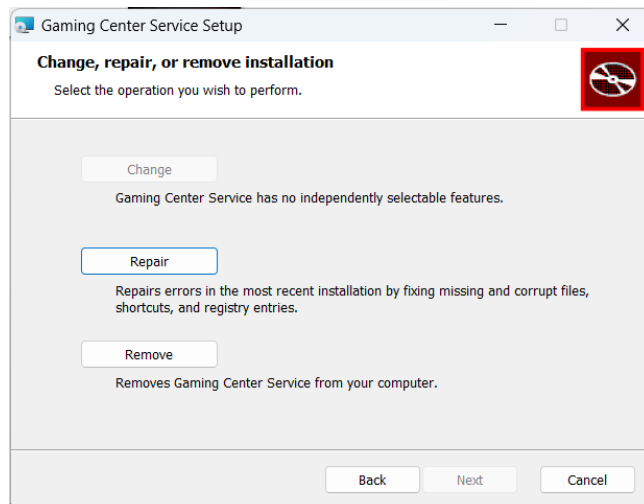
1. Double-click on the GamingCenterSetup.msi program in GamingCenter_Package_x.x.x.x.zip file



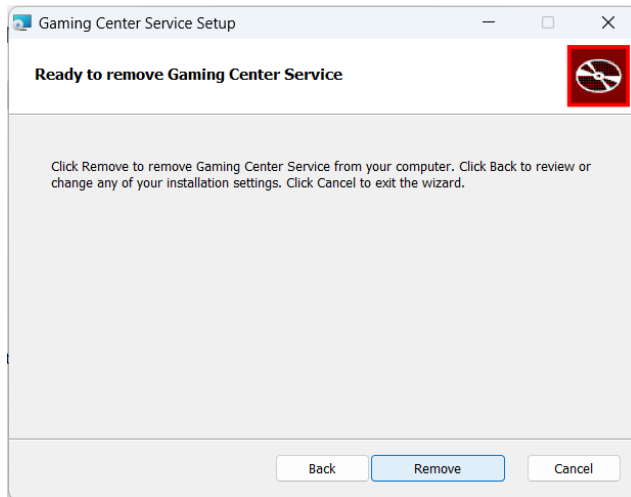
2. Welcome to Gaming Center Service Setup Wizard, please click **'Next'** to get started



3. In Gaming Center Service Setup, please select **'Remove'**



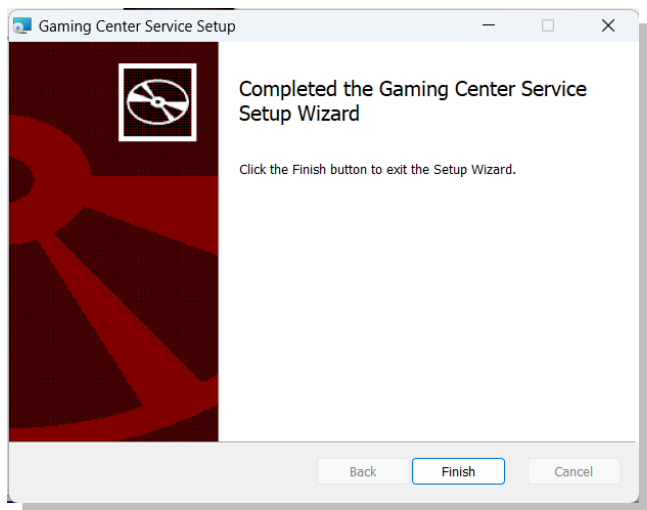
4. To confirm removing Gaming center application, please select '**Remove**' to proceed



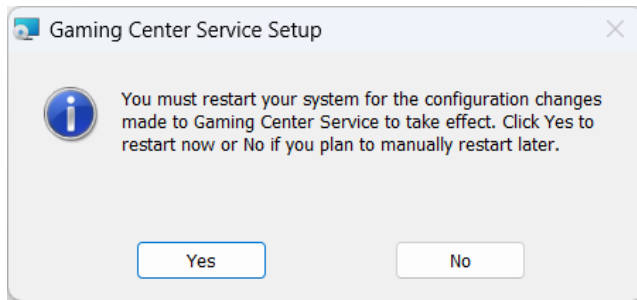
5. In User Account Control, please click '**Yes**' to continue



6. To completely remove the Gaming Center Service, please click '**Finish**'



7. To re-start system and remove Gaming Center Service, please click **'Yes'**



8. System will re-start and back to Windows environment, remove process completed

Using Gaming Center

4.1 Launching Gaming Center

Click on the Start menu , then select Gaming Center 

4.2 Dashboard

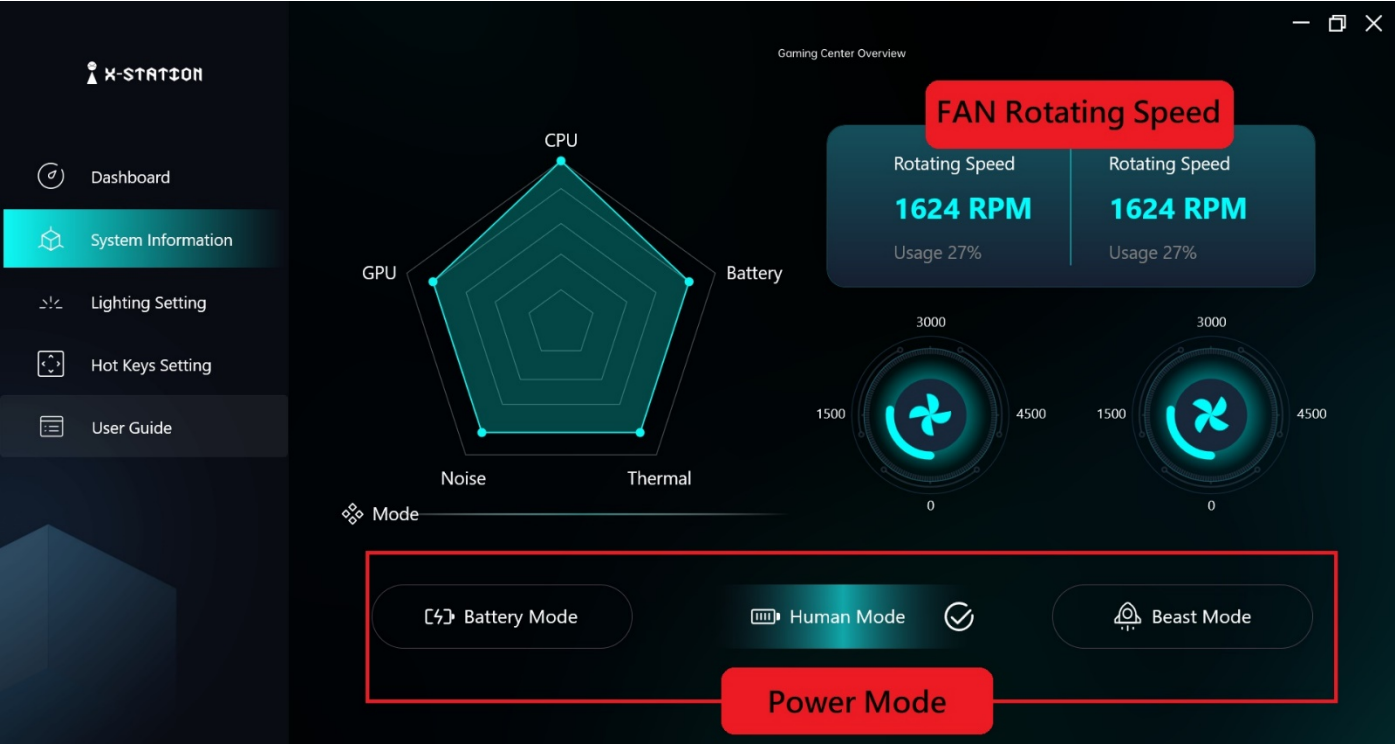


Descriptions:

CPU	
CPU	CPU information
CPU FREQ	Current CPU frequency
CPU Usage	Current CPU usage percentage
CPU Thermal	Current CPU temperature
GPU	
GPU	GPU information
GPU FREQ	Current GPU frequency
GPU Usage	Current GPU usage percentage
GPU Thermal	Current GPU temperature
Quick Setting	
Fan Full Speed	Select to Maximize GPU and GPU fan speed
MIC Mute	Select to Mute microphone
Touchpad	Select to Disable touchpad
Win Key	Select to Disable Windows key
PrtScn	Select to Disable Print screen key
Function key	Select to Disable All Function keys
Overview	
Fan 1	Current speed of System Fan 1

Fan 2	Current speed of System Fan 2
Battery	Current Battery capacity percentage
Memory	Current Memory usage percentage
Storage	Current available disk space

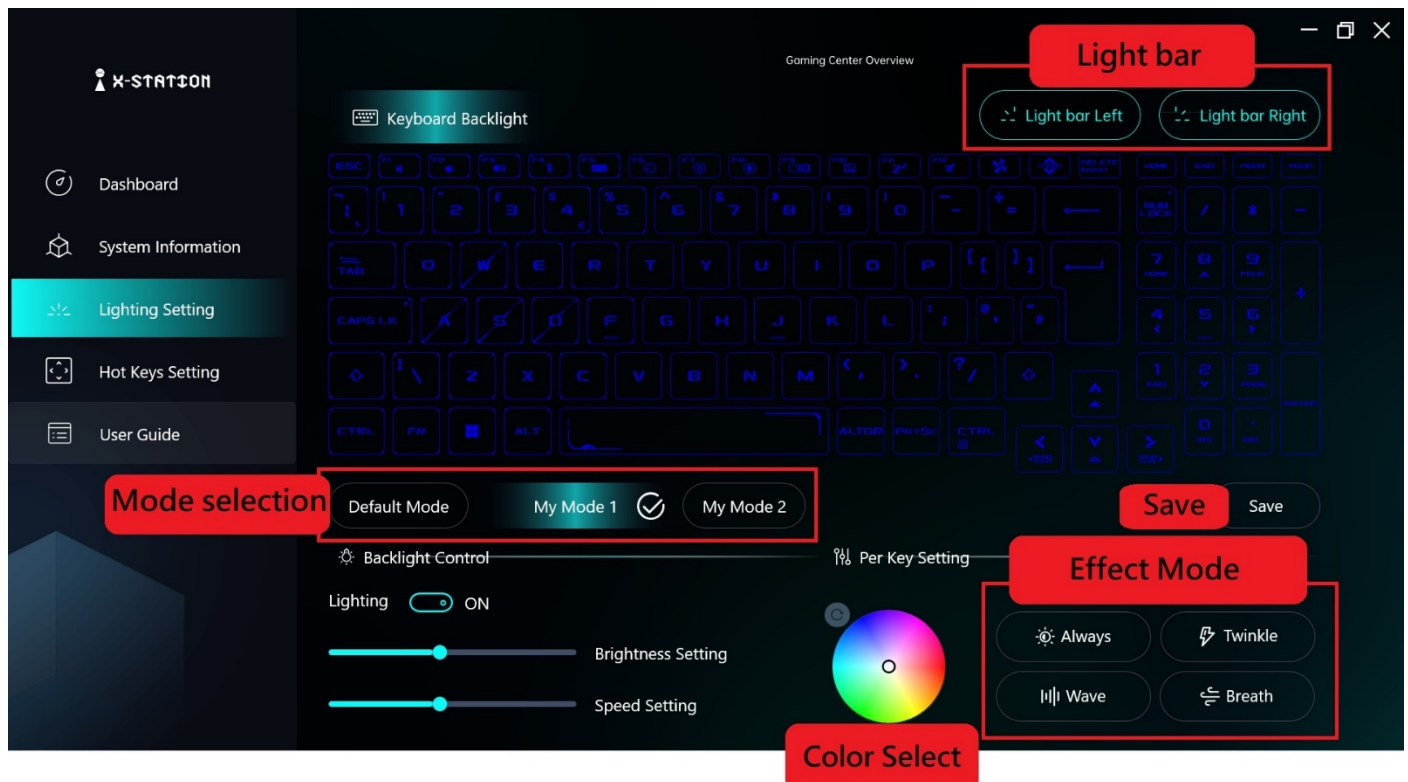
4.3 System Information



Descriptions:

Power Mode	
Battery Mode	Save energy by reducing the device performance when needed
Human Mode	Automatically balances performance with energy consumption
Beast Mode	Maximize best system performance
Fan Rotating Speed	
Left Rotating Speed	Current Left Fan Rotating Speed
Right Rotating Speed	Current Right Fan Rotating Speed

4.4 Lighting Setting



Descriptions:

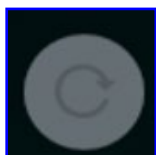
Two LED keyboard lighting effect setting modes: Default mode and My mode:

- Default mode: LED keyboard lighting effects are factory standard settings
- My mode: Offers Two personal setting modes for users to set & save customized keyboard color, brightness, speed, and light effect settings

Mode Selection	
Default Mode	System default keyboard & light bar effect
My Mode 1	1 st Personalized keyboard colors & lighting effect
My Mode 2	2 nd Personalized keyboard colors & lighting effect
Backlight Control	
Lighting ON/OFF	Turn on/off LED Keyboard Backlight and Light Bar
Brightness Setting	Brightness setting for Keyboard backlight and Light Bar
Speed Setting	Adjust light effect speed of Keyboard backlight and Light Bar
Per Key Light Effect Setting (only available for Per-key Keyboard)	
Light Effect Modes*	Provides 9 light effect modes: <ul style="list-style-type: none"> • Always on • Twinkle • Wave • Breath • Color Cycle • Reactive • Ripple • Spiral Rainbow • Circle Rainbow
Color Select	Each keyboard button and the left/right light bars can be set to personal favorite light effects
Light Bar (only available with Light bar included)	
Light bar Left	Setting favorite color
Light bar Right	Setting favorite color

* Light effects can also be easily set on keyboard out of Gaming center app by press & hold the Control key and press arrow keys up and down, or left and right, to switch across different light effect modes

Per-key color setting (only available for 'Per-key' type of Keyboard)



Use the icon next to 'Color Select' under 'Per-key setting' area:

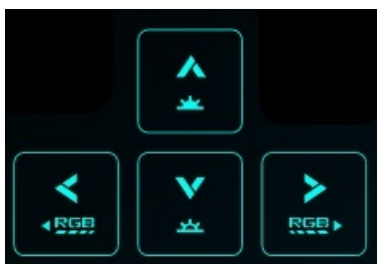
- When Icon is gray: Available to Set the selected key colors
- Click the Icon to Resets the key colors

Save button – Must click '**Save**' button to save ALL personal settings above

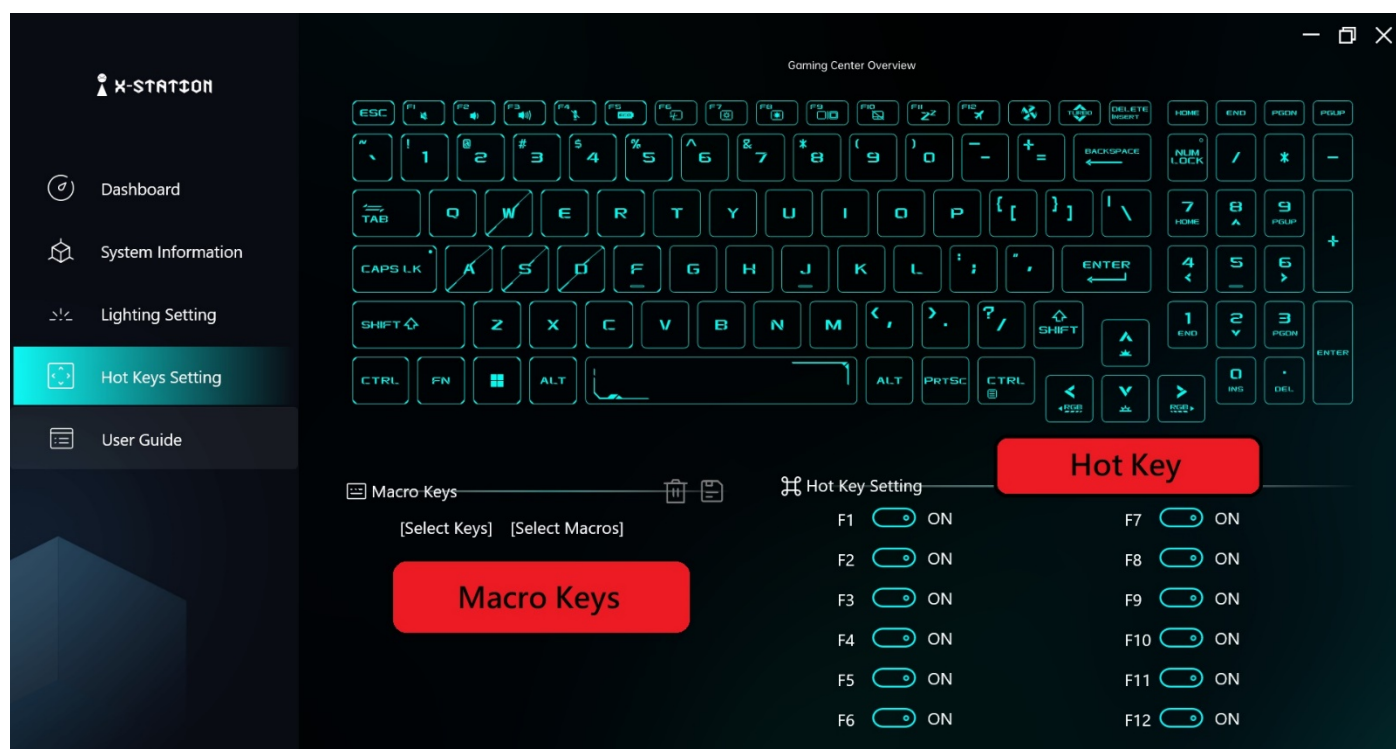
ALTERNATIVE TO SETUP KEYBOARD LED LIGHT EFFECTS BY PHYSICAL FUNCTION KEYS

Only available with Per-key and 4-Zone Keyboard types

- Keyboard brightness can be changed with up and down keys
- The effect modes can be switched by the left and right keys



4.5 Hot Keys Setting



Descriptions:


Multiple key combinations and enable/disable function keys are provided for better gaming experiences

Marco Keys	
Support 5 sets of Macro keys	Click 'Select Keys' then press preferred keys, e.g. press 'Control & A' keys simultaneously, then click on 'Select Macros' to enter preferred key sequences, e.g. 'A, A, A, W, W' for specific game actions, system will send 'A, A, A, W, W' keystrokes whenever user press 'Control & A' keys, for better gaming effects

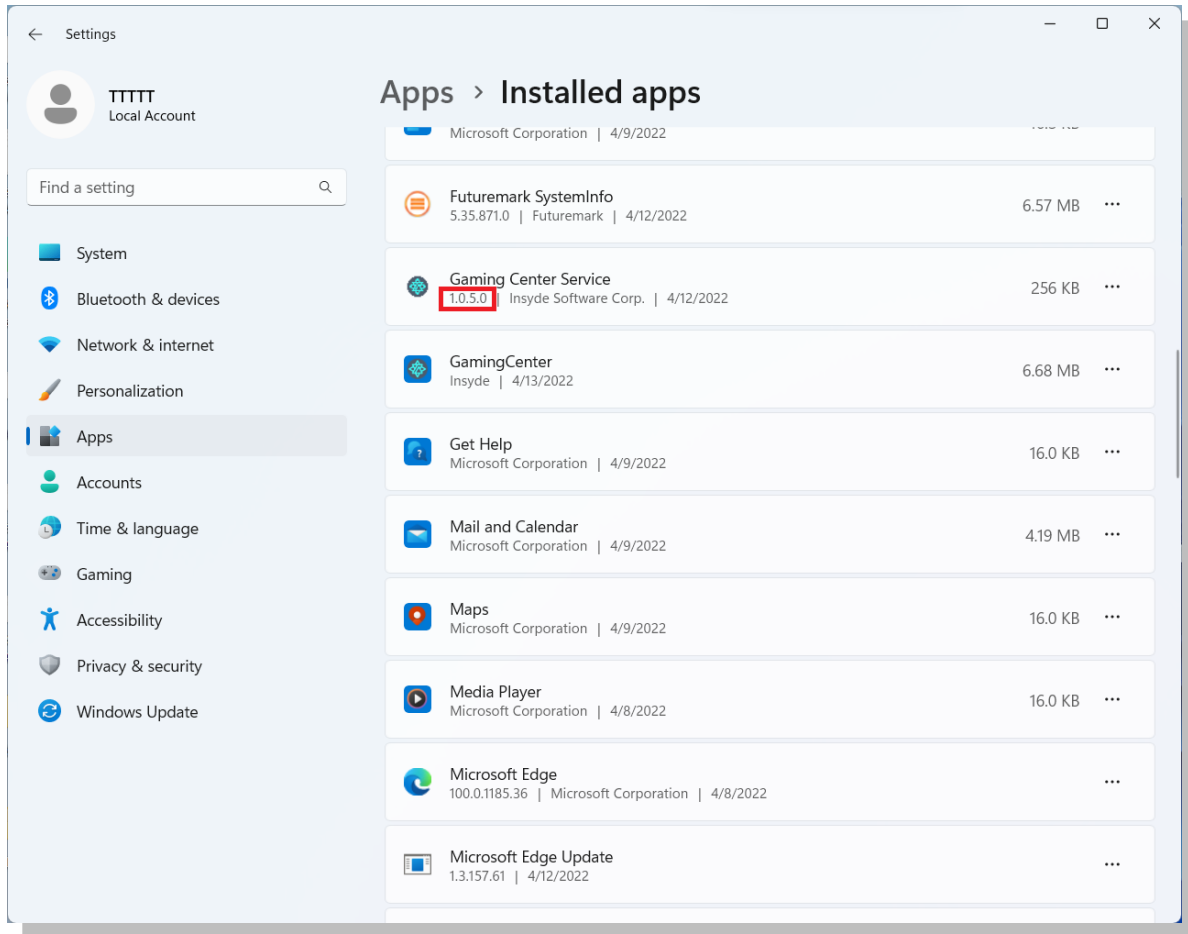
Hot keys Setting	
F1	Enable/Disable F1 key function
F2	Enable/Disable F2 key function
F3	Enable/Disable F3 key function
F4	Enable/Disable F4 key function
F5	Enable/Disable F5 key function
F6	Enable/Disable F6 key function
F7	Enable/Disable F7 key function
F8	Enable/Disable F8 key function
F9	Enable/Disable F9 key function
F10	Enable/Disable F10 key function
F11	Enable/Disable F11 key function
F12	Enable/Disable F12 key function

Appendix A - Gaming Center Version

1. Click the Start menu , then select settings .

2. Select Apps  Apps to view all Installed apps

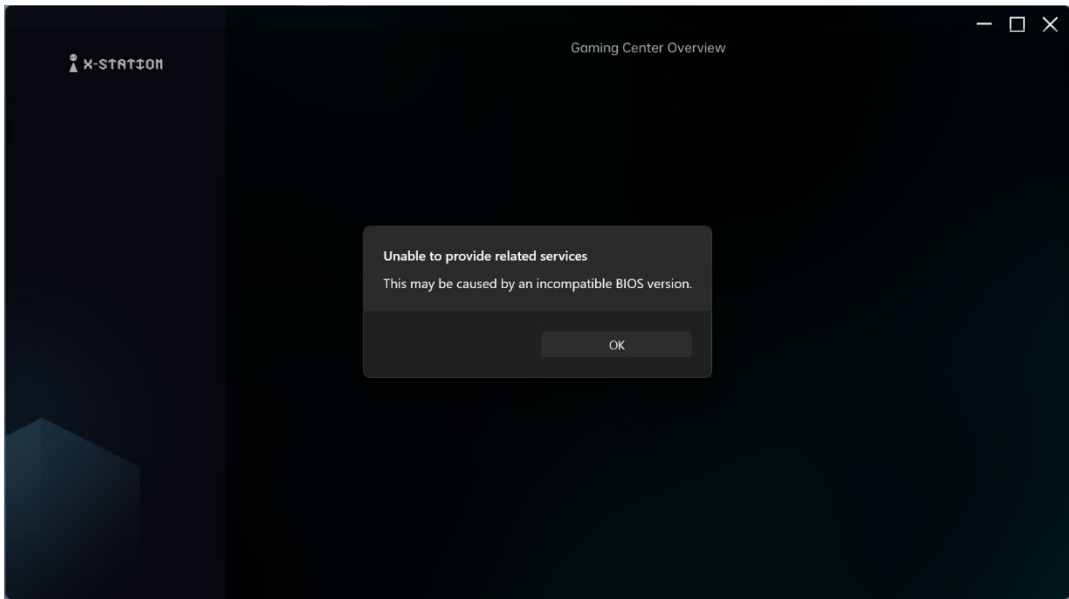
3. Current version of Gaming Center Service displays in the first 4 digits, e.g. '1.0.5.0' as below



Appendix B – What if Gaming Center is unable to start

Possible reasons:

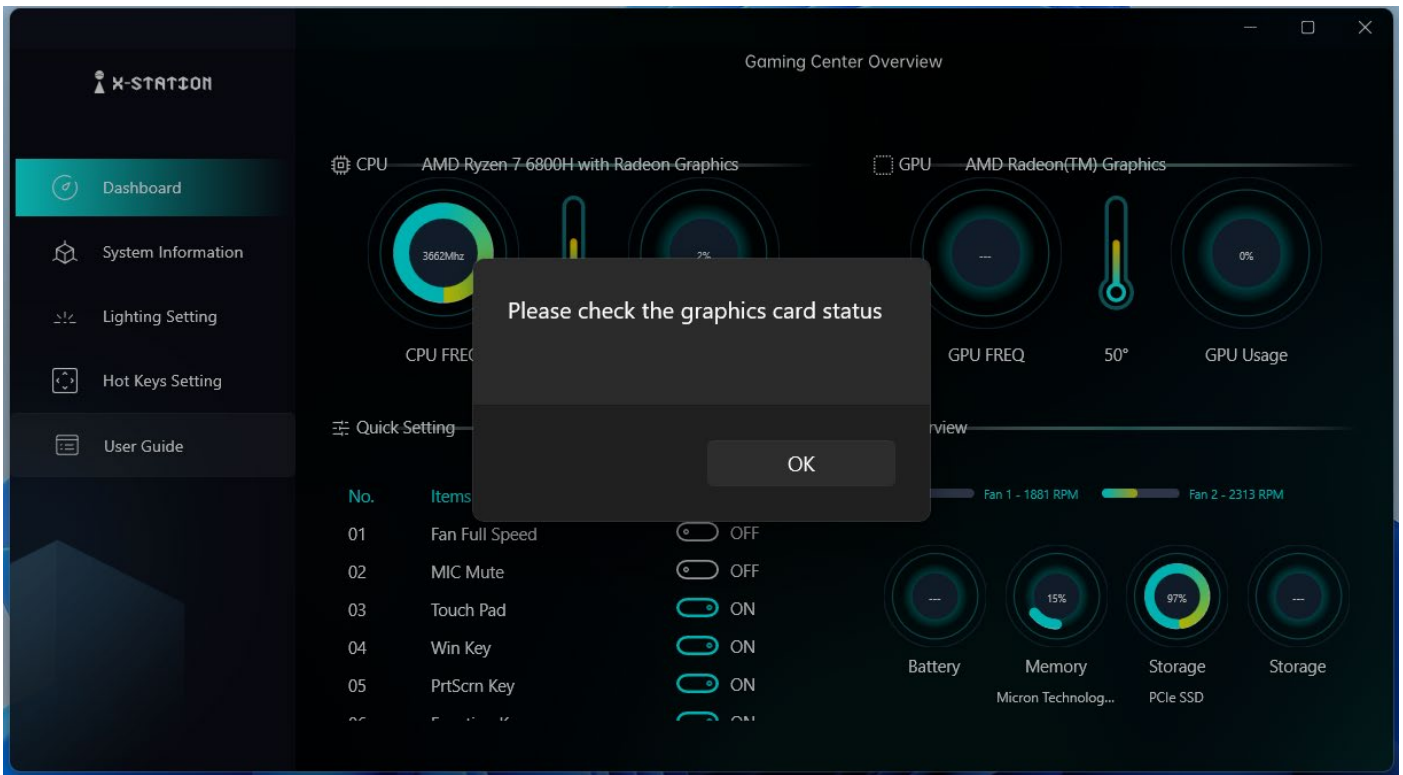
1. The laptop is not Emdoor gaming product series
2. Gaming Center is not supported with your current BIOS version, please contact your supplier



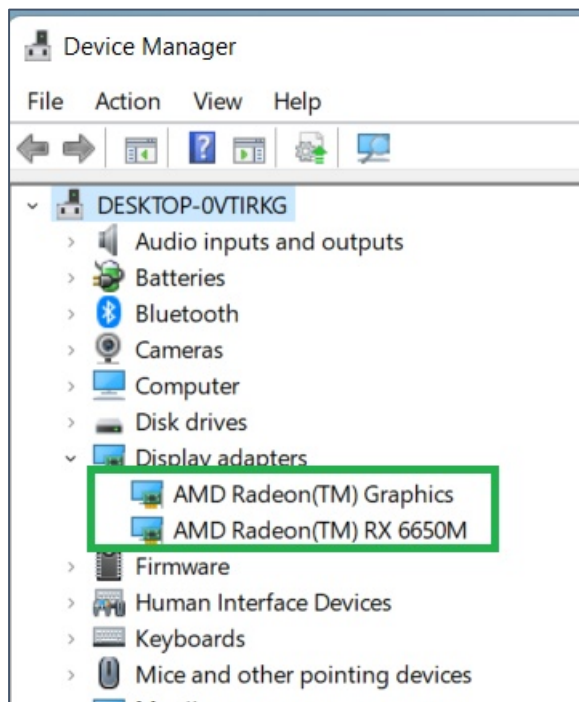
Appendix C – Popup message window

When the “Please check the graphics card status” message is displayed,

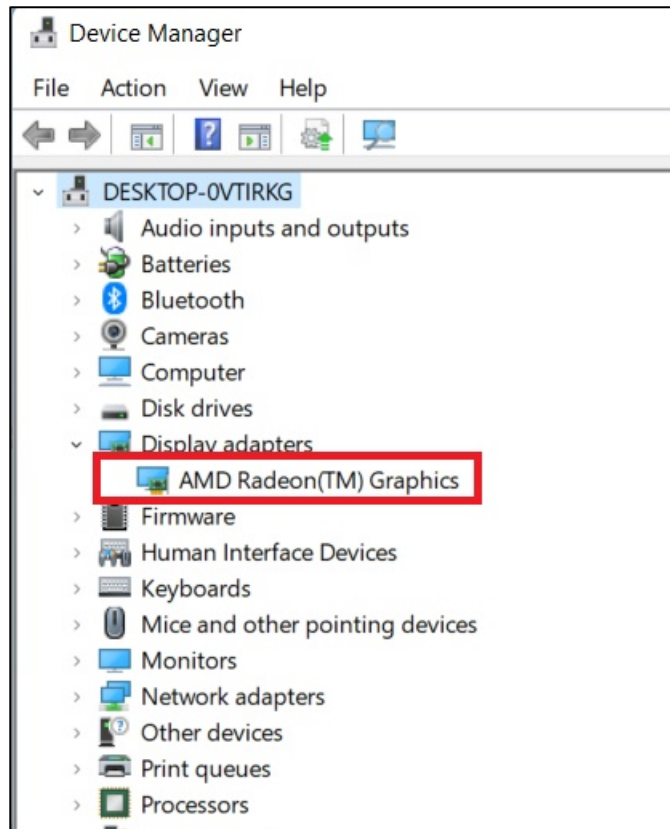
Please confirm whether the discrete graphics card is working properly.



Normal status



Abnormal state



Appendix D – Quick removal

Open the control panel and select "programs and features".

Please click the gaming center icon and select "Uninstall".

Execute in order.

